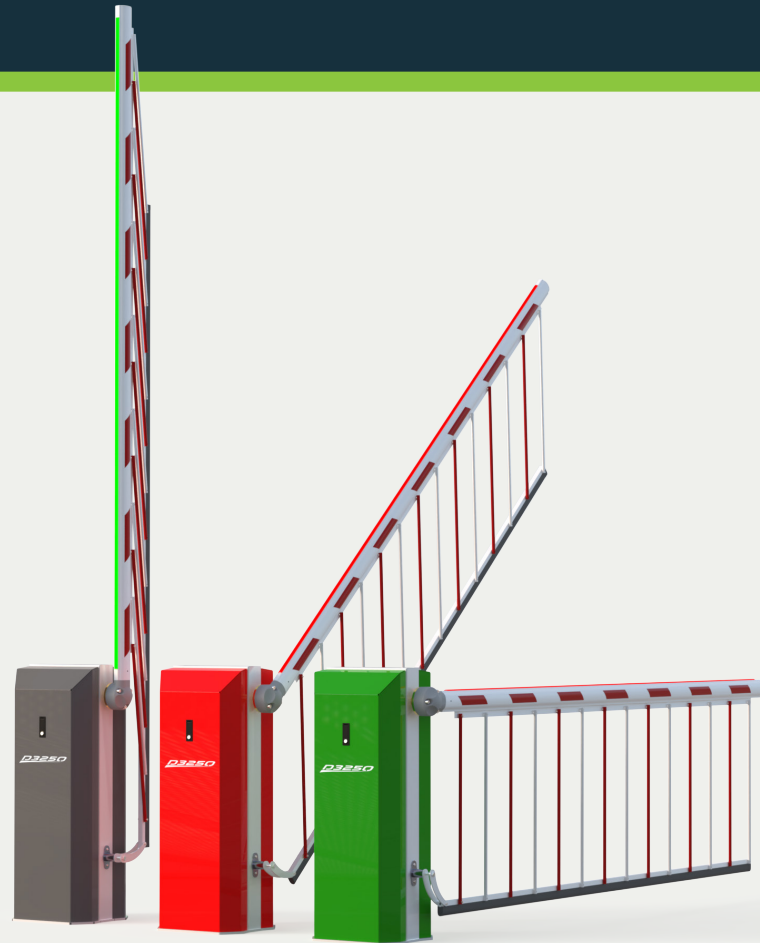


D3250E

AUTOMATIC BARRIER



MAXIMUM SPAN

7m
with a plain boom, 6m with a bottom skirt,
5m with a hi-bar upper and lower skirt

DIMENSIONS

**405x420
x1140mm**

POWER SUPPLY

**230v,
50Hz, 5AMP**

CONTROL

Feig PLC
with absolute position
encoder and force detection

FINISH

Polyester Powder
Coated in red and
white as standard

OPENING/CLOSING TIME

1.2 to 6 secs
(adjustable)

BOOM DIAMETER

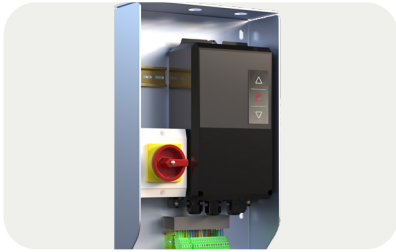
90x65mm
Oval

CYCLES

100%
continuous duty rating

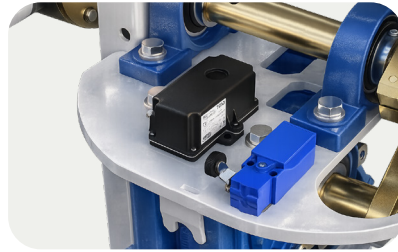
DRIVE UNIT

3 Phase
Inverter driven motor and wormed gearbox



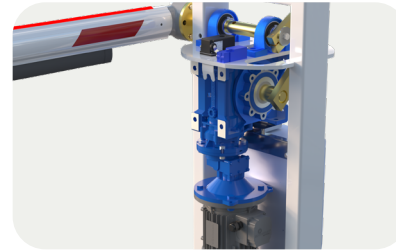
PLC

D3250E barriers are fitted with a state of the art Feig controller that incorporates a 3-Phase Inverter. This controls all motor speeds for ultimate control and efficiency.



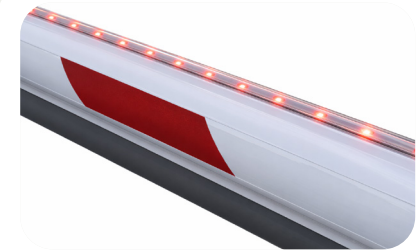
ENCODER

To enhance control and safety, all D3250E barriers are now fitted with an absolute encoder as standard. This ensures smooth boom movement and also incorporates force detection, providing a further layer of safety with a reverse function if contact with an obstacle is detected.



DRIVE

The D3250E barrier is driven using a 3-phase motor/gearbox providing 100% Duty Cycle. The motor is controlled via an inverter which means the barrier only requires a 230vac Single phase supply.



POLE DESIGN

The barrier pole is engineered with an integrated aluminium extrusion that incorporates LED lighting, skirts, and a safety edge. This clean, integrated design enhances the overall appearance while ensuring that key components such as skirts and lighting can be easily replaced if damaged, making on-site maintenance fast and efficient.



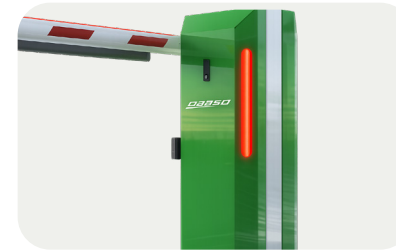
LOGO DESIGN

We offer bespoke laser-cut logo designs integrated into the outer covers, allowing for a fully customised appearance. These can be enhanced with colour-changing LED backlighting, creating a striking visual effect that complements front-of-house environments.



SKIRT

A lower skirt or hi-bar upper and lower version can be fitted to the barrier at additional cost, and high visibility STOP or NO ENTRY signs and LED boom lights may be specified to the boom.



BARRIER DESIGN

The cabinet has a clean contemporary appearance with fully removable clamshell covers to both sides to allow complete access to all internal components. Unlike many heavy duty barriers there are no counterweights which removes a potential trapping hazard and reduces the required installation space.



MASTER SLAVE

The D3250 can be configured in a master and slave setup, simplifying installations that require paired barrier operation. Only a simple 3-core cable is required between the two barriers, with the software providing true master/slave functionality. All signals are replicated, ensuring the slave barrier precisely mirrors the operation of the master.

